



Underwood Engineers

Park and Whittemore Infrastructure Improvements

Public Preconstruction Meeting



August 5th, 2025



Purpose of tonight's meeting is to review:

- **Project Team**
- **Project Purpose**
- **Project Background**
- **Anticipated Start-up and Work Progression Schedule**
- **Traffic Patterns During Different Phases**
- **Inconvenience of Construction**
- **Utility Connection Information**
- **Distribution of Public Information**
- **Questions**

Project Team

Project Team

Town of Hillsborough

Town of Hillsborough Water and Sewer Commission

Underwood Engineers, Inc.

Park Construction Corporation

Project Team – Town of Hillsborough

- Laura Buono – Town Administrator
 - Primary Office Contact
 - Phone: (603) 464-3877
- Ernie Butler – Road Agent
- Jim Bailey – Selectman (Chairman)

Project Team - Town of Hillsborough Water and Sewer Commission

- Penny Griffin – Administrator
 - Primary Office Contact
 - Phone: (603) 464-7982
- Peter Mellen – Chairman
- Dave Lewis – Commissioner
- Dana Clow – Commissioner
- Cody Boisvert – Water Operator

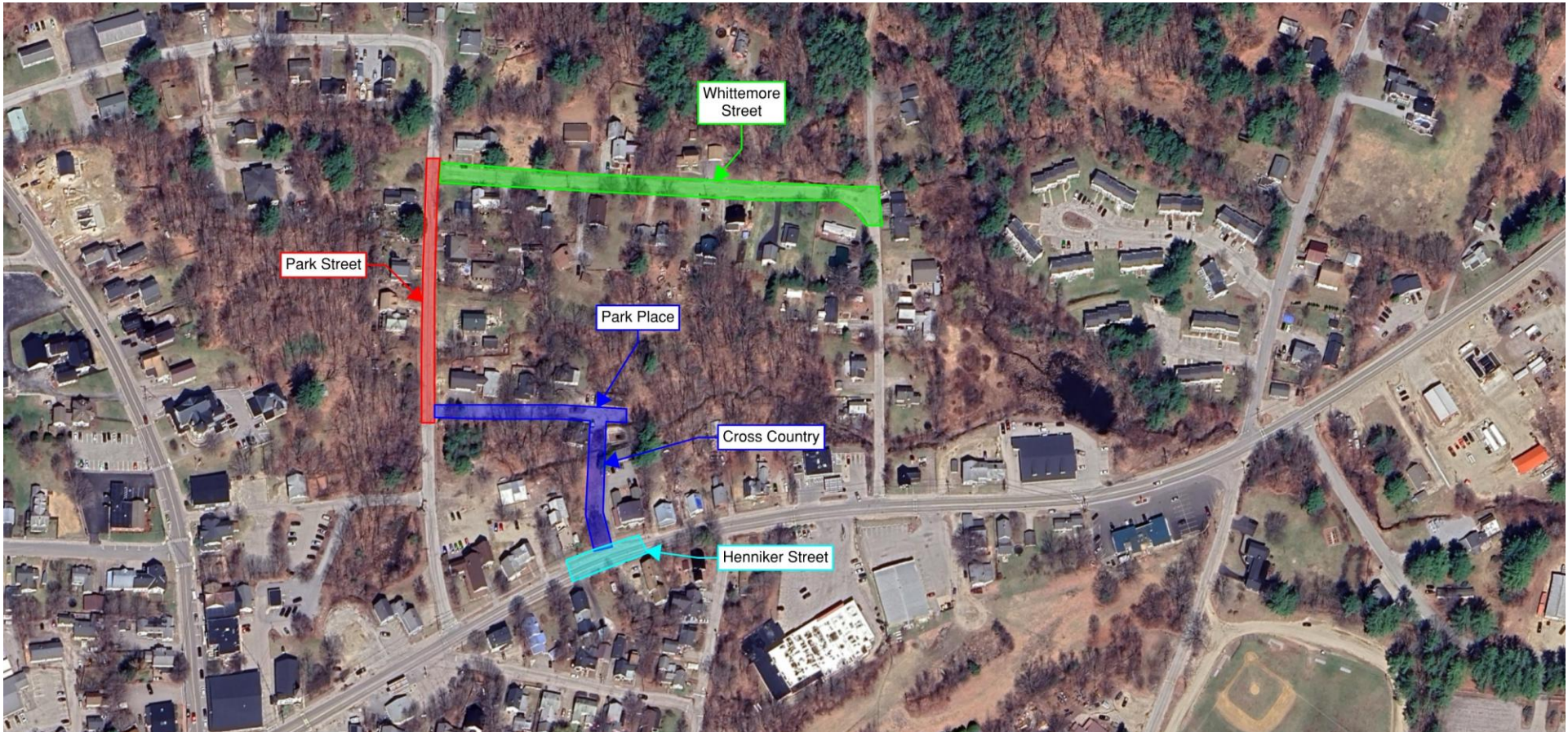
Project Team - Underwood Engineers, Inc.

- Jake Stoddard – Project Manager
 - Primary Office Contact (Portsmouth Office)
 - Phone: (603) 436-6192
- Zach Sullivan – Project Engineer
 - Secondary Office Contact (Concord Office)
 - Phone: (603) 230-9898
- Dan Rochette – Senior Technical Leader
- Carl Manseau – Resident Project Representative
 - Primary Field Contact
 - Phone: (603) 956-3844

Project Team - Park Construction Corporation

- Mark Norby – Principal
 - Primary Office Contact
 - Phone: (603) 585-6577
- Sean Adams - Superintendent
 - Primary Field Contact
 - Phone: (603) 209-2398

Project Limits – Whittemore, Park Street, Park Place, and Henniker



Project Purpose

Project Purpose

- Replace sewer, water, and drain which are primarily within Town ROW and approved easements
- Reduce I&I, resulting in less clean groundwater entering Hillsborough's sewer system
- Replace water and sewer services to the ROW limit
- Reconstruct roadway
- Also provide storm lateral drains for abutter sump pumps

Whittemore Street (900 ft)

- **Scope:**

- Sewer replacement to reduce inflow and infiltration
- Complete drainage improvements as needed
- Roadway Improvements (including new sidewalk)

- **Concerns:**

- Aging infrastructure contributing to system inefficiencies
- Basement flooding and sump pump discharge
- Deep existing sewers at Park Street intersection.
 - Tough to maintain



Park Street (500 ft)

- **Scope:**
 - New sewer, water, and drainage system installation
 - Addition of drainage and catch basins
 - Reconstruct roadway
- **Concerns:**
 - Aging infrastructure contributing to system inefficiencies
 - Basement flooding and sump pump discharge
 - Deep existing sewers
 - Backyard combined services



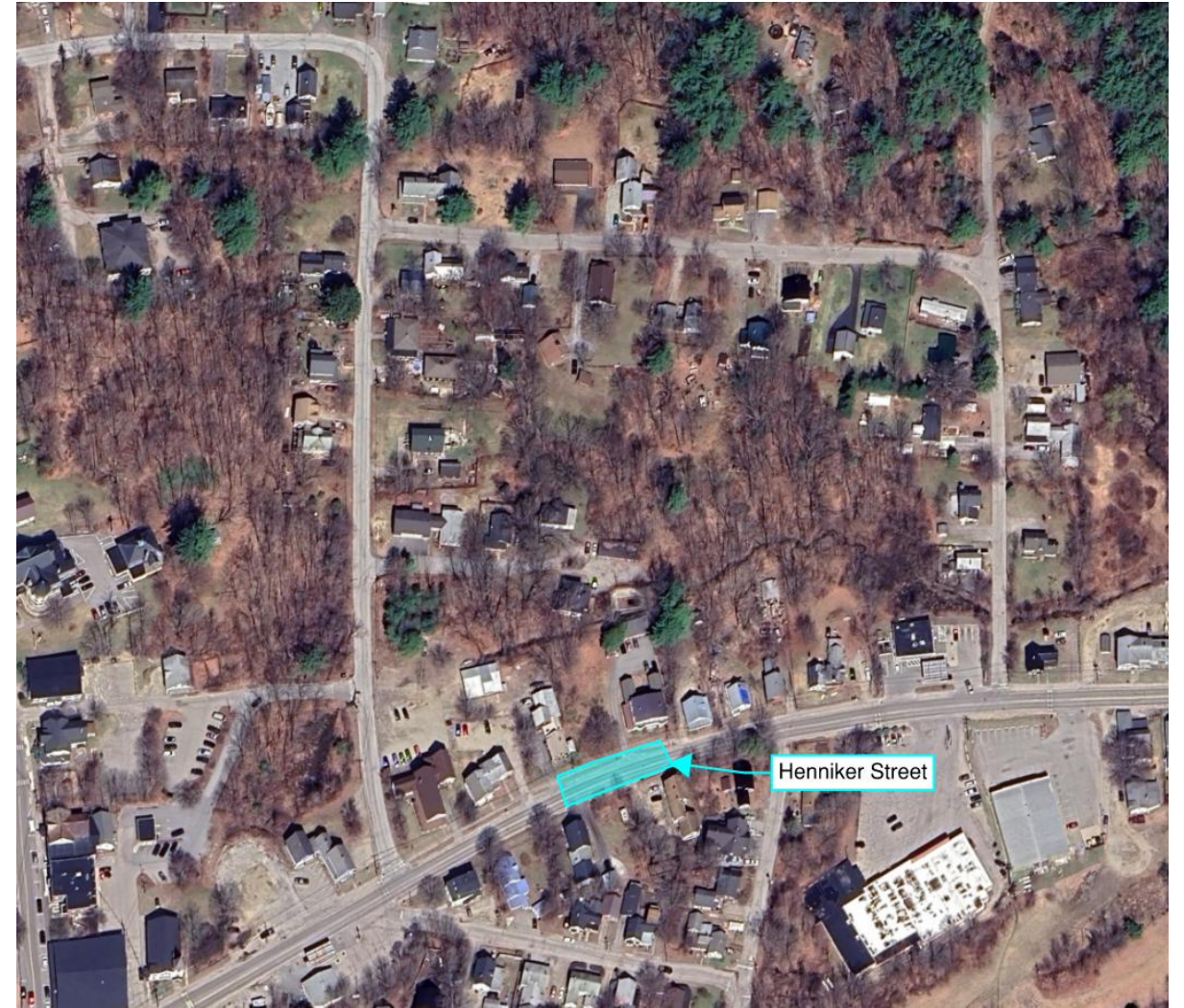
Park Place (250 ft)

- **Scope:**
 - New sewer, water, and drainage system installation
 - Addition of drainage and catch basins
 - Reconstruct roadway
- **Concerns:**
 - No existing gravity sewer connection
 - Runoff from Town portion of road currently flows onto private property
 - Ponding and flooding
 - Coordination with abutters



Henniker Street (100 ft)

- **Scope:**
 - Connect new sewer from Park Place to existing sewer on Henniker
- **Concerns:**
 - Heavy traffic flow
 - Existing utilities



Routing Evaluations

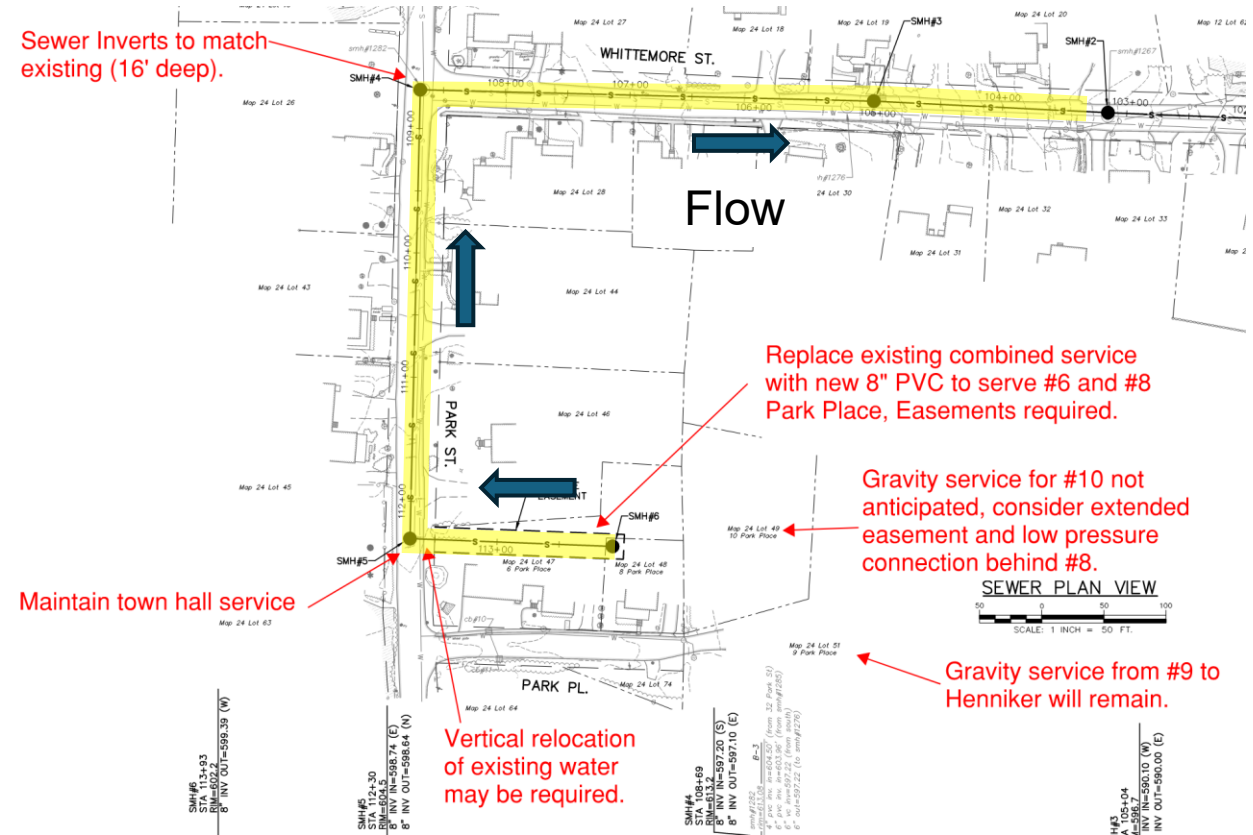
- **Option #1:** Maintain existing Configuration

Pros:

- Less LF of sewer main

Cons:

- Gravity does not extend to new users and requires low pressure connections
- 16 ft depth at Park & Whittemore
- Easements required
- Upgrade existing shared services on Park Place



- **Option #2: New Sewer On Park Place To Whittemore**

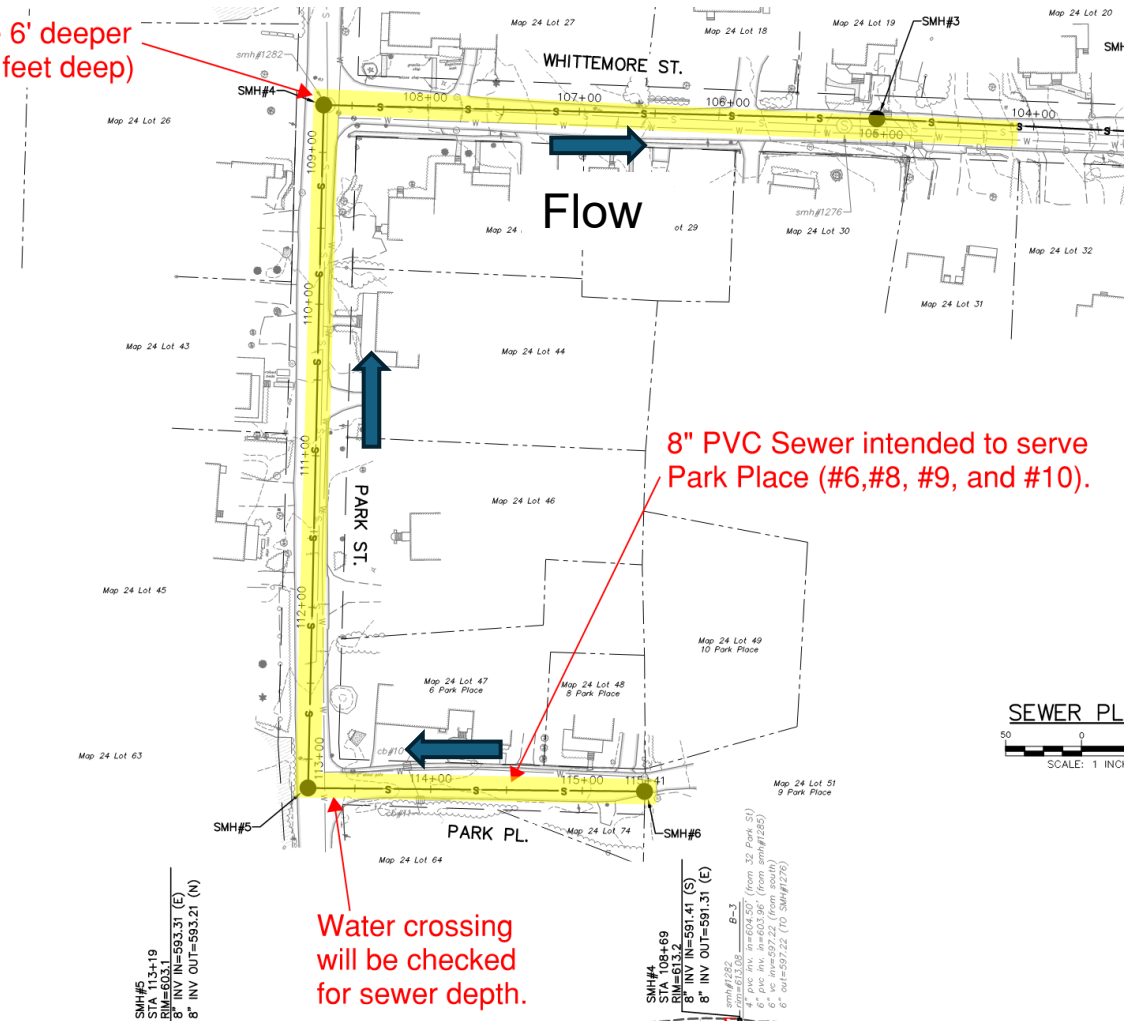
Pros:

- Extends gravity to all of Park Place
- Reasonable length of new sewer main pipe
- No Easements required

Cons:

- Exceeds 20 ft depth
- Potential utility crossing conflicts

Sewer inverts are 6' deeper than existing (22' feet deep)



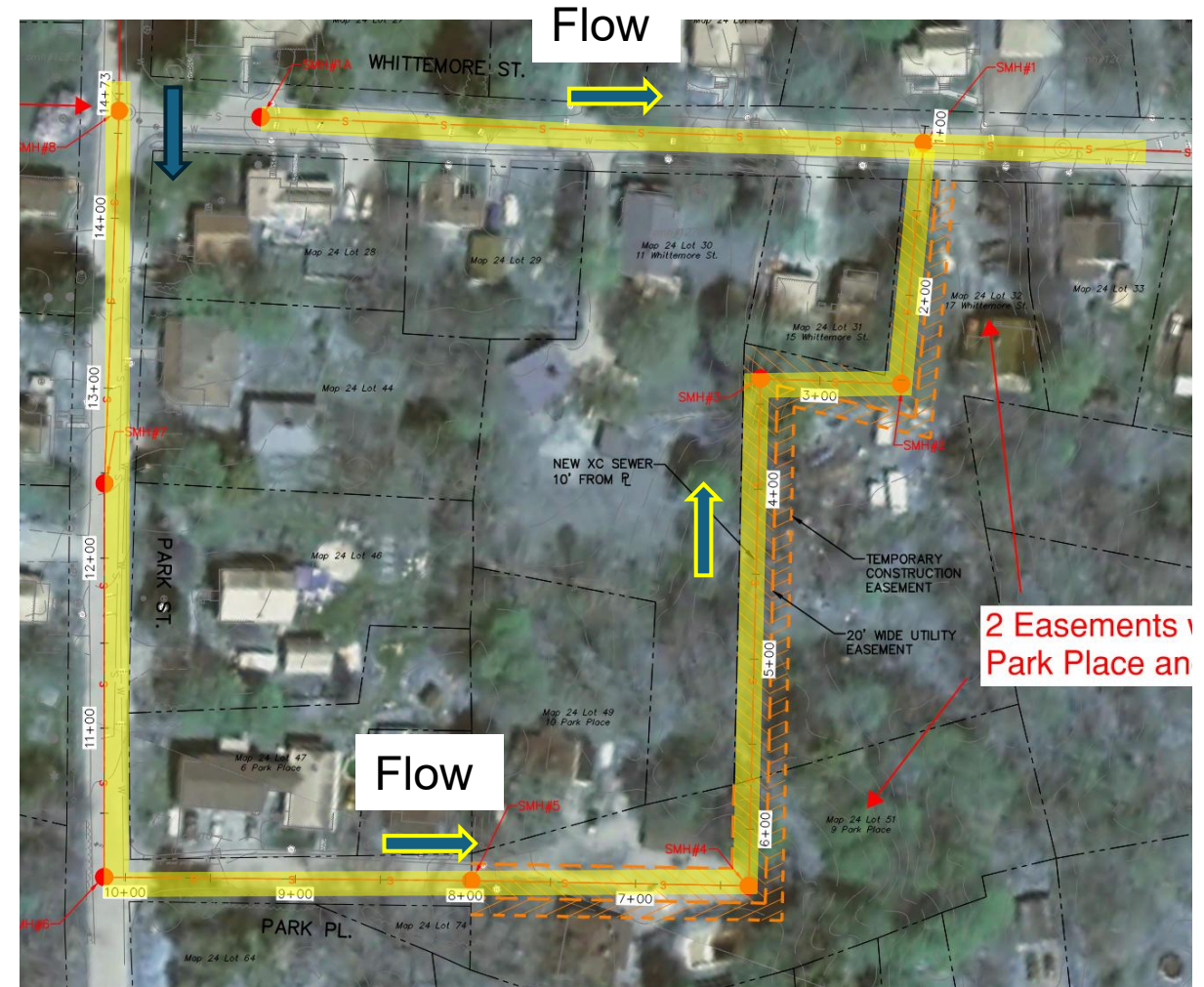
- **Option #3:** Cross Country route to Whittemore from Park Place

Pros:

- Provides gravity sewer to all of Park Place
- Shallower installation depth (8'+/-)
- Follows natural grade of Park Street

Cons:

- Longest addition of sewer main
- Easements required



- **Option #4:** Cross Country behind Park Place and Henniker

Pros:

- Provides gravity sewer to all of Park Place
- Shallower installation depth (8' +/-)
- Reasonable length of new sewer main pipe

Cons:

- Easements required



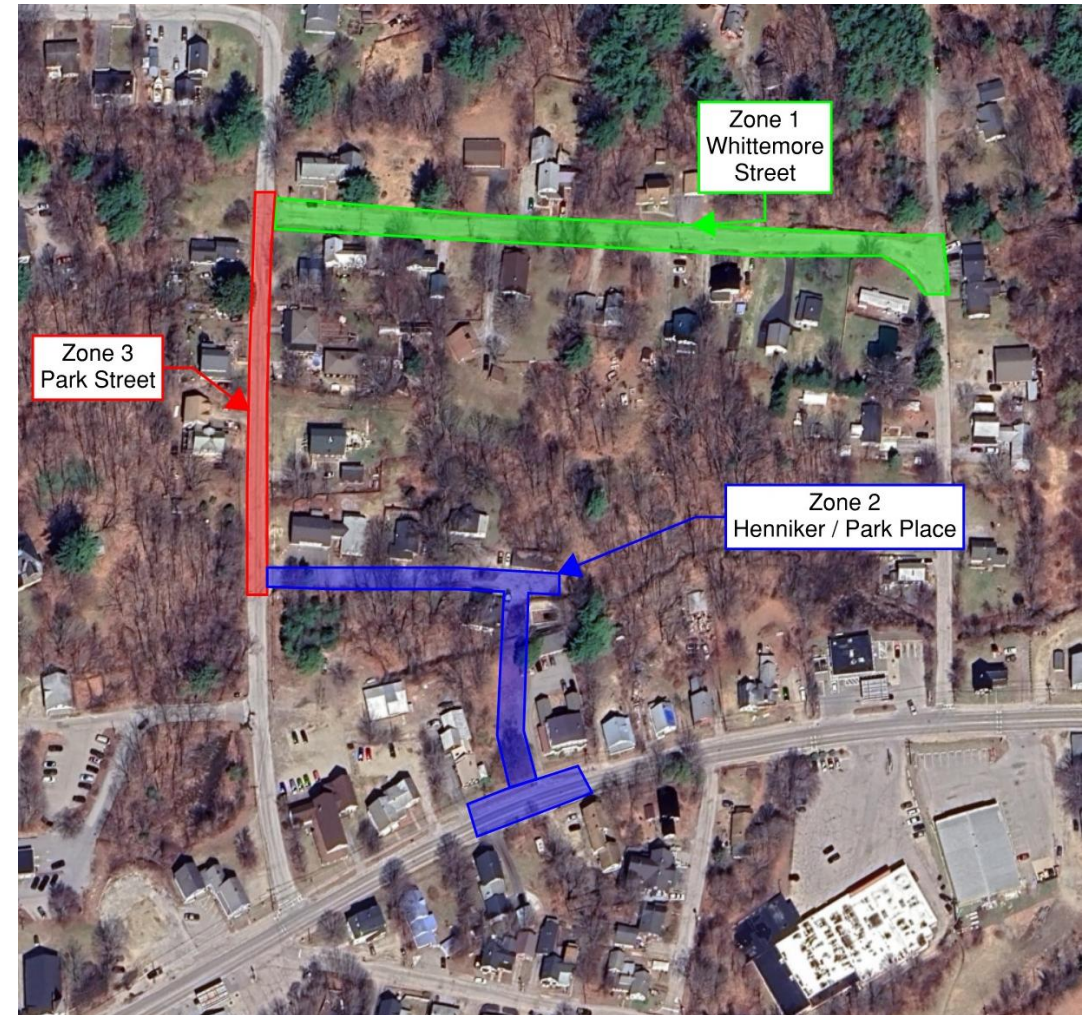
Construction

Construction Start-Up Schedule

- Mobilization will begin week of August 11th, 2025 (Work Hours 7-6)
- Substantial Completion by mid-November
 - Utility work complete
 - Roadway restored and paved
 - Curbing and sidewalk in place
- Final Completion by Summer 2026
 - Final paving overlays

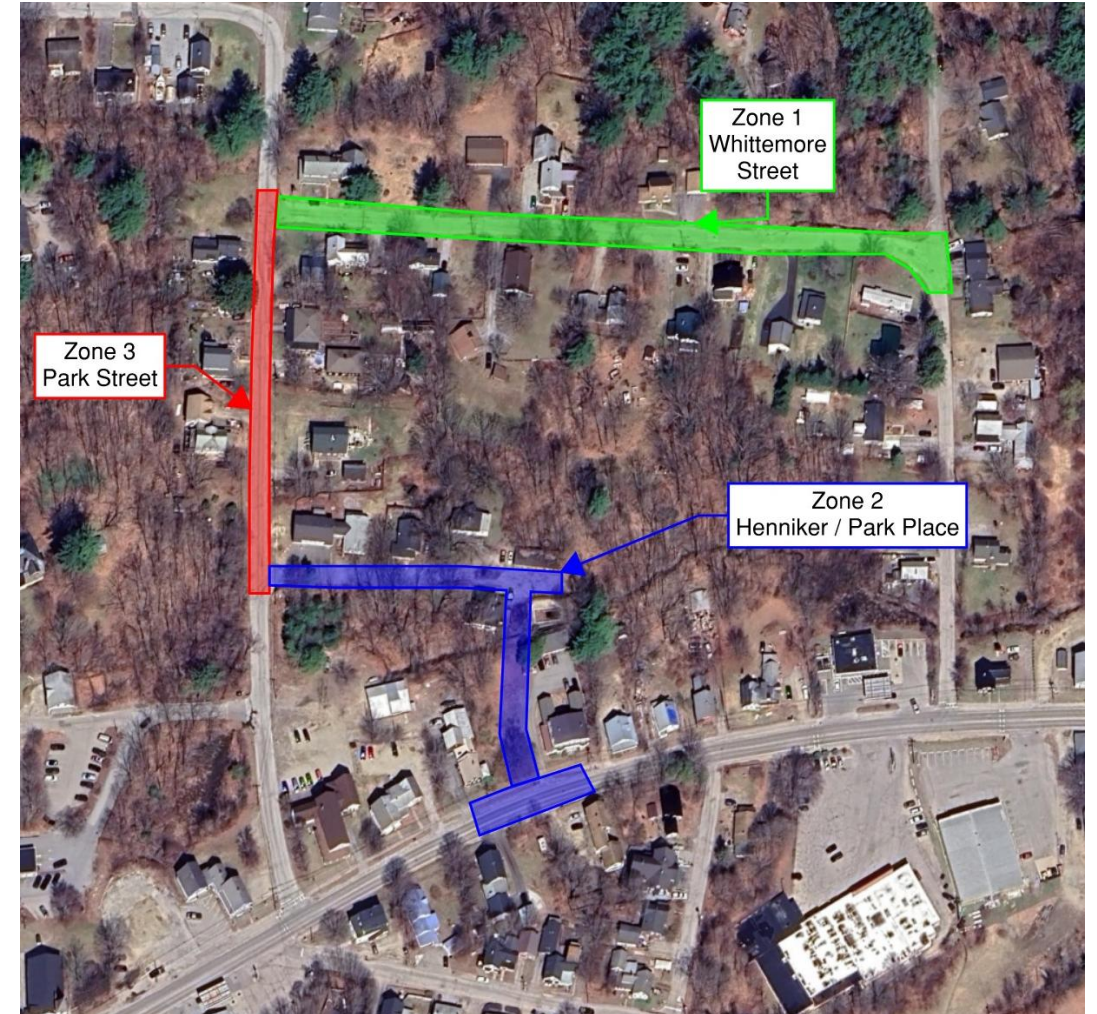
Project Sequencing

- Work will be completed in 3 Primary work “zones” based on location and utility type
 - Zone 1 – Whittemore
 - Zone 2 – Henniker / Park Place
 - Zone 3 – Park Street



Project Sequencing

- Deepest utility first with shallower utilities to follow in each zone
 - Sewer first
 - Water second
 - Drain third
 - Road Recon
- Work on sewer and drain starts at the lowest point and works uphill
- Crews will excavate in front of your property multiple times



Traffic Patterns – General

- A traffic management plan is currently under development and will be shared with the public once finalized
- Work Zones closed during working hours
 - Access to all properties will be maintained
 - Emergency Vehicle access will be maintained
- Special coordination for Park Place
- Flaggers and crew will help access properties



Traffic Patterns - Henniker

- Contractor is still determining full nature of impacts
- Road closure and detour may be necessary
 - Follow marked detours
- Possible night work to minimize traffic disruptions



Inconveniences of Construction

- Traffic Impacts
- Noise
- Dust
- Water Service interruptions
 - Key sequencing and tie in work – up to 4 hours
 - 2 days notice provided
 - Service connection change over up to 30 minutes
 - Same day notice



Utility Connections

- Sewer and Water connections will be replaced to the property line where utility main replacement is proposed
- Storm Drain Connections will be provided for select properties where sump pumps exist and/or the property generally drains toward the road
- Sewer Connections will be made at the Property line
- Town will contact select Owners at Park Place about connecting existing back yard services or septic systems to new sewer main
- Town is reviewing financial incentives it can provide property owners through the project to extend drain services to the dwelling to connect sump pump



Distribution of Public Information

- Field of Personnel (Door to Door)
 - Carl Manseau – Underwood
 - Sean Adams – Park
- Message Boards
- Project Web Page (weekly updates)
- E-mail distribution lists
 - Please leave your email on the sign in sheet if you would like to be included on the distribution list



Questions?