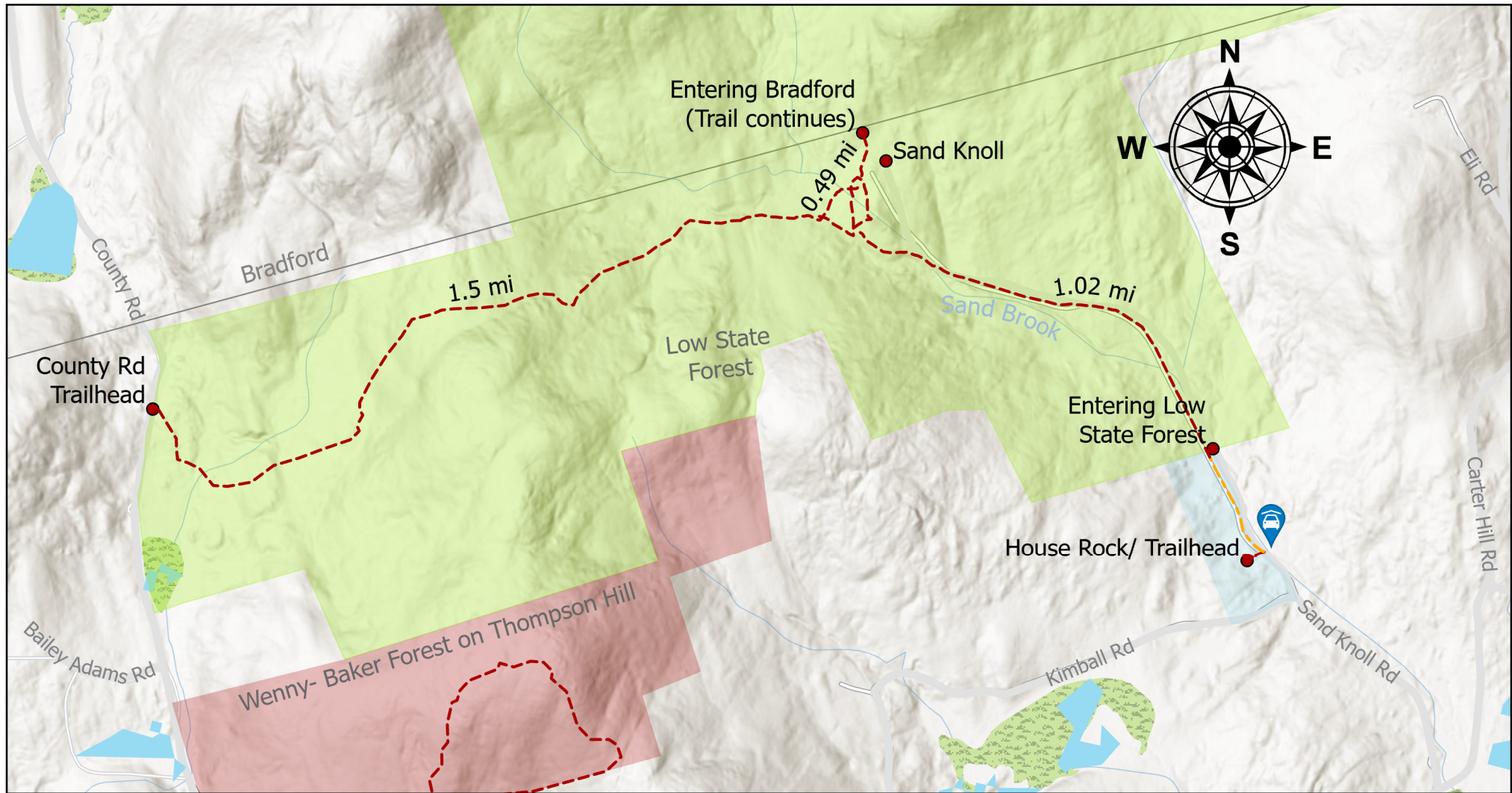




Hillsborough Hikes

House Rock and Low State Forest



Legend

- Parking
- Points of Interest
- Hiking Trails
- Multi-use Trails
- Swamp/Marsh
- Municipal Conservation Land
- Private Conservation Land
- State Conservation Land

0 0.13 0.25 0.5 Miles

Low State Forest - Babbling brook, sand knoll, mature forest trees, wildlife, birds, mushrooms, cross-country skiing, snowshoeing, hiking. Undeveloped trail heading west to County Road through cleared, regenerating forest. No marked trails and no motor vehicles allowed. North trail continues into Bradford.

House Rock - Large glacial erratic (170 ft in circumference, 30 ft in height), cave-like passage through the boulder. Mailbox on site with a visitor log. Hike or cross-country ski north on Sand Knoll Rd to follow Sand Brook (wild trout brook).

Carry In- Carry Out, including pet waste.

Map created for the Hillsborough Conservation Commission, Hillsborough, NH, in 2025 by Shawna Caron.