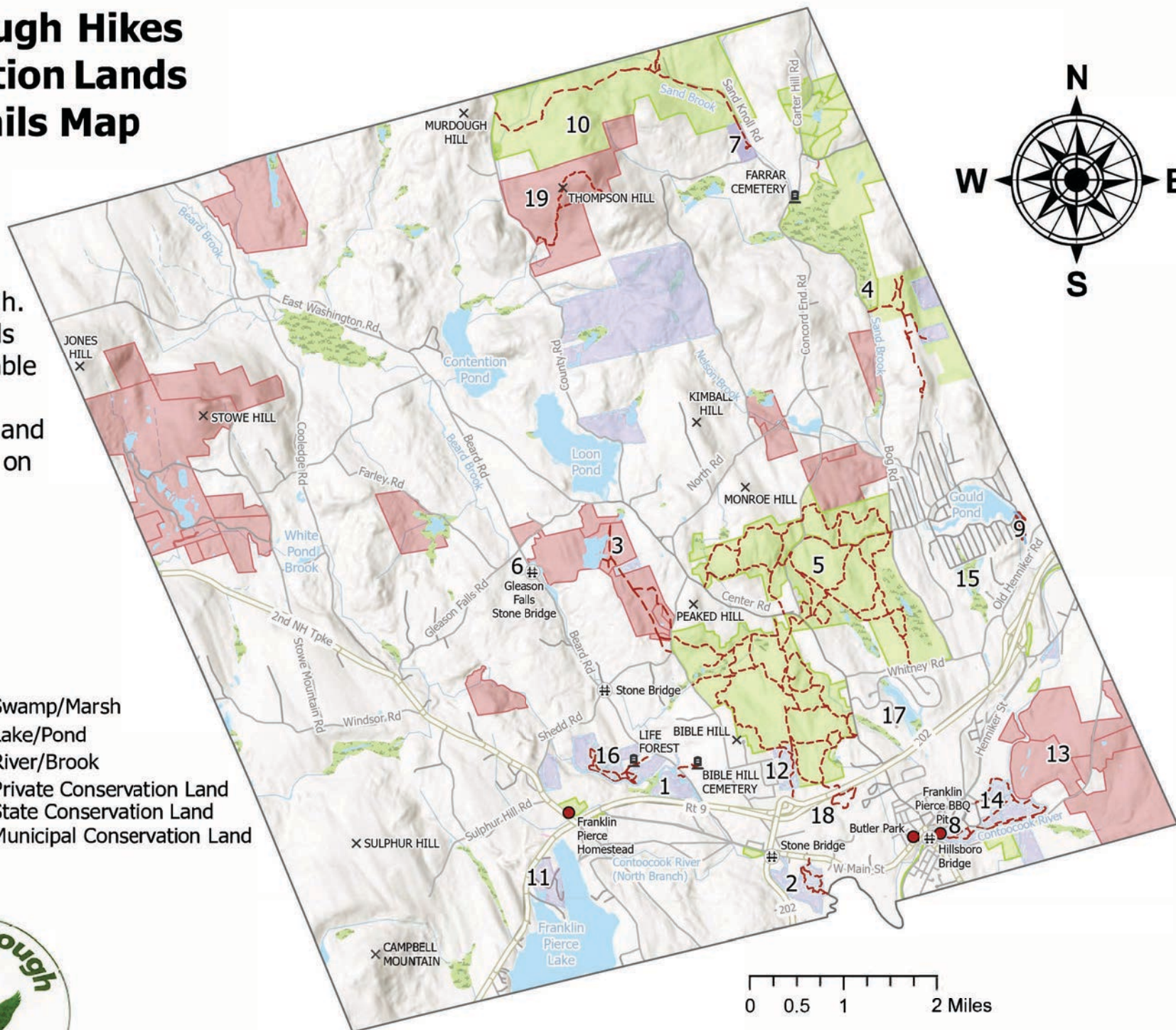


# Hillsborough Hikes Conservation Lands and Trails Map

This map shows conservation lands of Hillsborough. The numbered lands and trails are available for recreation. The conservation areas and trails are described on page two.

## Legend

- × Summit
- ☒ Cemetery
- ≡ Bridge
- Point of Interest
- - - Trail
- Local Road
- US, State, or Tpk
- Swamp/Marsh
- Lake/Pond
- River/Brook
- Private Conservation Land
- State Conservation Land
- Municipal Conservation Land



## Hillsborough Hikes Conservation Lands and Trails Map

1. **Beard Brook Park (Town Beach)** - Cold brook pool with swimming, sandy beach, fishing, portable toilet, picnic tables, and emergency telephone. Short, easy trail (0.05 mi) upstream allows for bird watching, nice views of the babbling brook. 3.1 ac.  
  
**Bible Hill Cemetery** - Trail from Beard Rd, through private property. A short, uphill hike (0.15 mi) to the well-maintained cemetery, which dates back to 1788. Historical setting, good for bird watching. 0.002 acre.
2. **Confluence Trail** - Easy hiking trail (0.9 mi) leads to the confluence of the Contoocook and North Branch Rivers. Marked trails, old fields, oxbows, vernal pools, wetland forest, two benches, osprey nest, beaver dam, wildlife, and bird watching. The bench overlooking the confluence is on private property. 53 acres.
3. **Cottrell Place** - Rustic, marked, easy hiking trails (2 mi) through upland forest to the town water line and a marked loop trail. Good location for hunters, wildlife enthusiasts, mushroom collectors, and birders. Trail is not regularly maintained. Forest Society trailhead on Jones Rd across from Fisher Cat Trail in Fox State Forest. 114 acres.
4. **Farrar Marsh** - Wildlife marsh with a small dam on Sand Brook (wild trout brook). Kayak/canoe launch, wildlife habitat, beaver lodges, waterfowl nesting, otters, cross-country skiing. Easy to Moderate hiking trails (2.5 mi) through mixed, upland forest with stone walls, barn foundations, old cellars/foundations. Very large, old white ash tree on private property. 620 acres.
5. **Fox State Forest** - Over 20 miles of marked, easy to moderate trails through virgin and old growth forests, working research forest. Trailheads on Bog Rd, Whitney Dr, Center Rd, and Jones Rd. 1445 ac.
6. **Gleason Falls** - Historic stone arch bridge and waterfall, 1st Conservation Commission-owned land, geological slip fault. 3.6 acres.

7. **House Rock** - Large glacial erratic (170 ft in circumference, 30 ft in height), cave-like passage through the boulder. Mailbox on site with a visitor log. Hike or cross-country ski north on Sand Knoll Rd to follow Sand Brook (wild trout brook). 20 ac.
8. **Kemp Park** - Downstream from Hosier Mill Dam. Historic large, stone, circular barbecue pit used by Franklin Pierce. Gazebo and scheduled events. Trails (0.75 mi) connect to Grimes Field and Riverwalk by Baseball Field #4. 0.5 acre.
9. **Lake Lot** - Conservation land along east and west sides of Sand Brook. Downstream from Gould Pond (Emerald Lake). Rustic in/out, easy trails (0.7 mi). Fishing, hiking, cross-country skiing, rushing waters, many large wolf pines abutting the rock wall and upslope from the trail. Birds, mushrooms, nature immersion. View of an old, retired sawmill foundation (on private property) from the south end of the trail on the west side. 6.6 acres.
10. **Low State Forest** - Babbling brook, sand knoll, mature forest trees, wildlife, birds, mushrooms, cross-country skiing, snowshoeing, hiking. Undeveloped trail heading west to County Rd through cleared, regenerating forest. No marked trails and no motor vehicles allowed. North trail continues into Bradford. Hiking trails are 3 mi total and easy to difficult throughout. 717 acres in HB.
11. **Manahan Park** - Sandy beach on Franklin Pierce Lake, pavilion, picnic sites, camping. Boat launch, playground, restrooms. Large e. white pine and e. hemlock trees preserved by deed. 44 acres.
12. **Meeting Hill Woods** - Mixed Forest parcel between Meeting Hill Rd and Fox State Forest. Marked, easy trails (0.8 mi) connect to Ridge Trail and Harvey Rd. Hiking, cross-country skiing, bird watching, mushrooms, wildlife viewing, glacial erratics. Near the south end of Harvey Rd, you can view "Tree Rock" - a large, Eastern hemlock with stilted roots growing on a glacial erratic. 20 acres.
13. **Penelope and John Dawson Memorial Forest** - Contoocook River frontage, snowmobile trail along river, no marked hiking trails, or trailheads. Good for hunting and wildlife enthusiasts. Bobolinks present in ridge field. Trails are not maintained. 530 acres.

14. **Riverwalk** - Beautiful, easy hike through mixed hardwood forest along the Contoocook River. Small beach sections allow for fishing. Seasonally accessible island, bird watching, fishing, wildlife viewing, cross-country skiing. 3 mi of trails. 113 ac.
15. **Rowe Marsh** - Wetland area with woods along the west edge, native winterberry, bird and wildlife viewing, unmarked easement along stone wall from the north end of Merrill Rd to south side of the marsh. No marked trails. 18 acres.
16. **Shedd Brook** - Marked upland, moderate, loop trail and brook loop trail (1.7 mi). Dramatic rapids and small waterfalls on Shedd Brook. Hiking, cross-country skiing, bird watching, wildlife viewing, mushrooms. Large glacial erratic (southeast of HCC sign). 86.5 acres.
17. **Town Marsh** - Heron rookery, beaver lodge, hiking, bird watching, native plants, wildlife viewing. No marked trails. Access through easements on Madison Cir and Jefferson Dr. 30.3 acres.
18. **Underpass Trail** - Winding, easy, woodland trail (0.85 mi) on Hillsborough-Deering Cooperative School District property. Trail passes through a wildlife underpass which crosses under highway 202/9 and meets with Ridge Trail in Fox State Forest. No signs at trailheads. Hiking, cross-country skiing, dogs allowed on leash. 14.6 acres.
19. **Wenny-Baker Forest on Thompson Hill** - Highest point in Hillsborough, great winter views, Forest Society trailhead sign on County Rd, main trail leads to several loop trails to access summit, some steep trail sections, numerous rock cairns mark the trails, mountain laurels, wild blueberries, upland forest, stone walls, fresh spring along the trail, adjoins Low State Forest on north side. Easy to difficult hiking throughout (1.5 mi). 358 acres.

<https://hillsboroughnh.org/conservation-commission/>



**Hillsborough  
Conservation Commission**  
P.O. Box 7  
Hillsborough, New Hampshire  
03244-0007