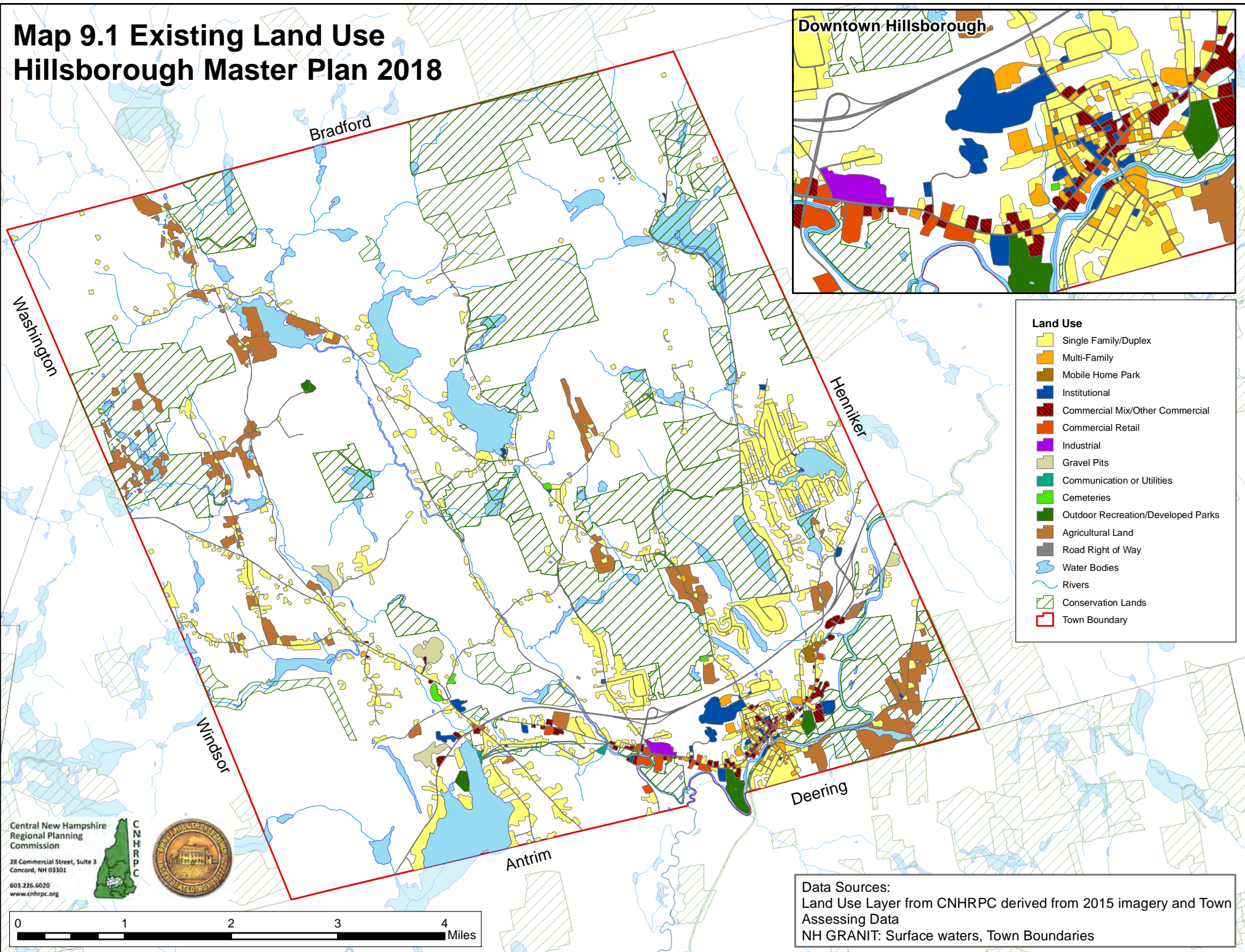



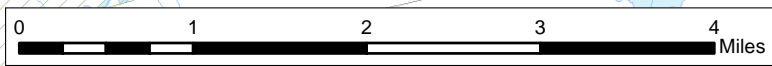
Map 9.1 Existing Land Use Hillsborough Master Plan 2018



Land Use

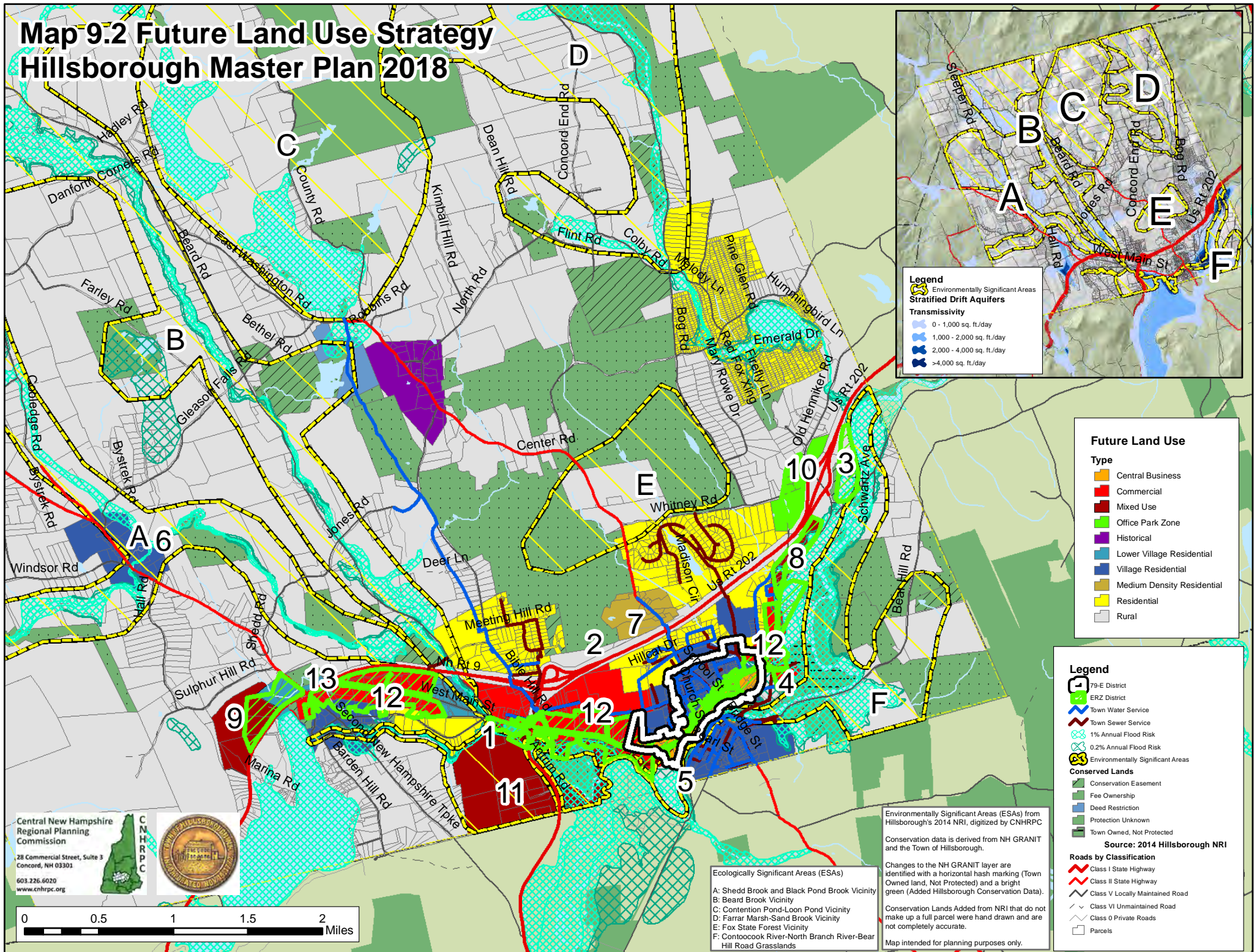
- Single Family/Duplex
- Multi-Family
- Mobile Home Park
- Institutional
- Commercial Mix/Other Commercial
- Commercial Retail
- Industrial
- Gravel Pits
- Communication or Utilities
- Cemeteries
- Outdoor Recreation/Developed Parks
- Agricultural Land
- Road Right of Way
- Water Bodies
- Rivers
- Conservation Lands
- Town Boundary

Central New Hampshire
Regional Planning
Commission
28 Commercial Street, Suite 3
Concord, NH 03301
603.226.6020
www.cnhrpc.org

Data Sources:
Land Use Layer from CNHRPC derived from 2015 imagery and Town Assessing Data
NH GRANIT: Surface waters, Town Boundaries

Map 9.2 Future Land Use Strategy Hillsborough Master Plan 2018



Legend
 Environmentally Significant Areas
Stratified Drift Aquifers
Transmissivity

- 0 - 1,000 sq. ft./day
- 1,000 - 2,000 sq. ft./day
- 2,000 - 4,000 sq. ft./day
- >4,000 sq. ft./day

Future Land Use

Type

- Central Business
- Commercial
- Mixed Use
- Office Park Zone
- Historical
- Lower Village Residential
- Village Residential
- Medium Density Residential
- Residential
- Rural

Legend

- 79-E District
- ERZ District
- Town Water Service
- Town Sewer Service
- 1% Annual Flood Risk
- 0.2% Annual Flood Risk
- Environmentally Significant Areas

Conserved Lands

- Conservation Easement
- Fee Ownership
- Deed Restriction
- Protection Unknown
- Town Owned, Not Protected

Roads by Classification

- Class I State Highway
- Class II State Highway
- Class V Locally Maintained Road
- Class VI Unmaintained Road
- Class O Private Roads
- Parcels

Ecologically Significant Areas (ESAs)

A: Shedd Brook and Black Pond Brook Vicinity
 B: Beard Brook Vicinity
 C: Contention Pond-Loon Pond Vicinity
 D: Farrar Marsh-Sand Brook Vicinity
 E: Fox State Forest Vicinity
 F: Contoocook River-North Branch River-Bear Hill Road Grasslands

Environmentally Significant Areas (ESAs) from Hillsborough's 2014 NRI, digitized by CNHRPC
 Conservation data is derived from NH GRANIT and the Town of Hillsborough.
 Changes to the NH GRANIT layer are identified with a horizontal hash marking (Town Owned land, Not Protected) and a bright green (Added Hillsborough Conservation Data).
 Conservation Lands Added from NRI that do not make up a full parcel were hand drawn and are not completely accurate.
 Map intended for planning purposes only.

Central New Hampshire
 Regional Planning
 Commission
 28 Commercial Street, Suite 3
 Concord, NH 03301
 603.226.6020
 www.cnhrpc.org

