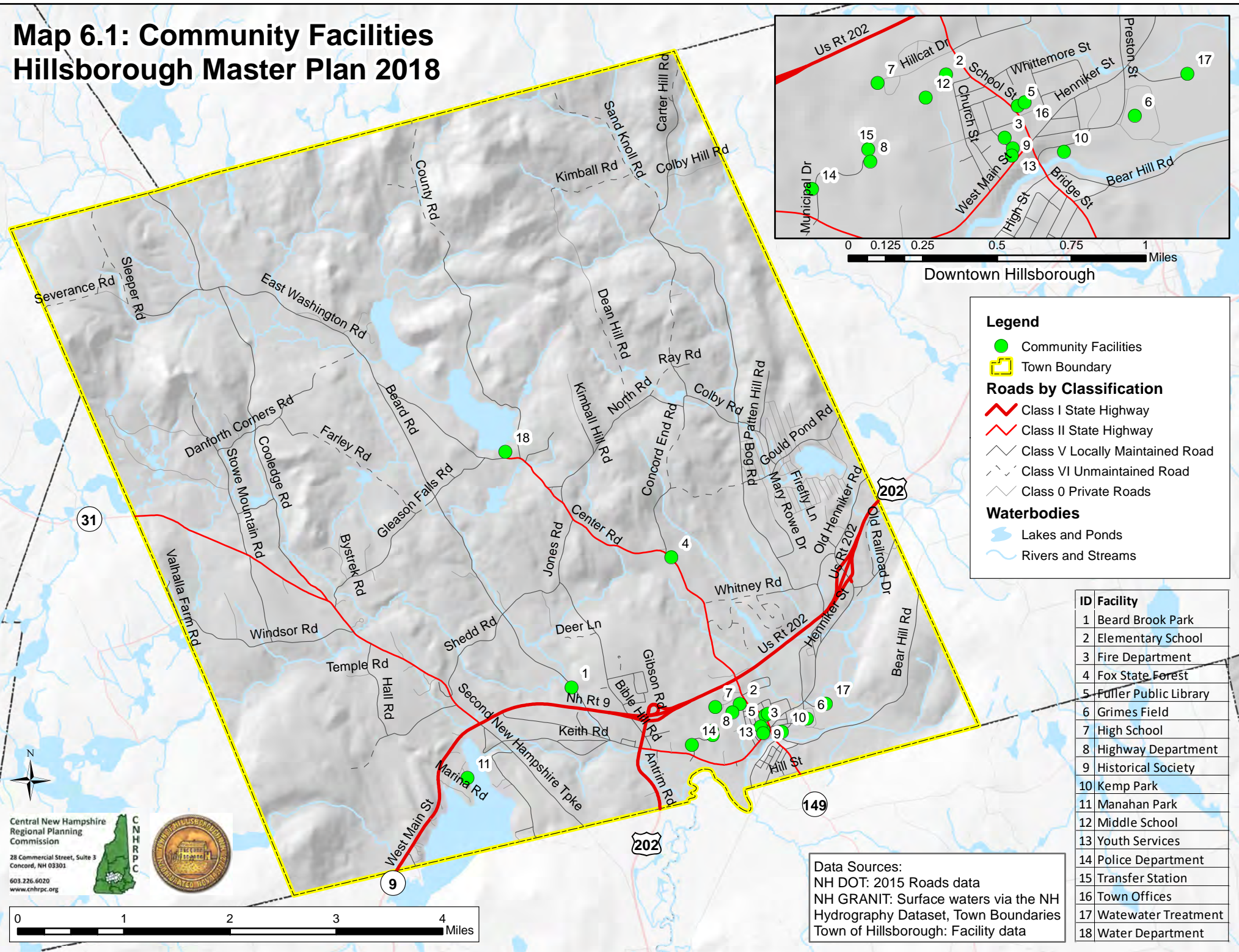


Map 6.1: Community Facilities Hillsborough Master Plan 2018



Legend

- Community Facilities
- ▭ Town Boundary

Roads by Classification

- ▬ Class I State Highway
- ▬ Class II State Highway
- ▬ Class V Locally Maintained Road
- ▬ Class VI Unmaintained Road
- ▬ Class 0 Private Roads

Waterbodies

- ▬ Lakes and Ponds
- ▬ Rivers and Streams

ID	Facility
1	Beard Brook Park
2	Elementary School
3	Fire Department
4	Fox State Forest
5	Fuller Public Library
6	Grimes Field
7	High School
8	Highway Department
9	Historical Society
10	Kemp Park
11	Manahan Park
12	Middle School
13	Youth Services
14	Police Department
15	Transfer Station
16	Town Offices
17	Wastewater Treatment
18	Water Department

Data Sources:
 NH DOT: 2015 Roads data
 NH GRANIT: Surface waters via the NH Hydrography Dataset, Town Boundaries
 Town of Hillsborough: Facility data

Central New Hampshire
Regional Planning
Commission

28 Commercial Street, Suite 3
Concord, NH 03301
603.226.6020
www.cnhrpc.org

